



CENTER FOR UROLOGIC CARE
OF BERKS COUNTY



Urology Week is here!

September 26 - September 30

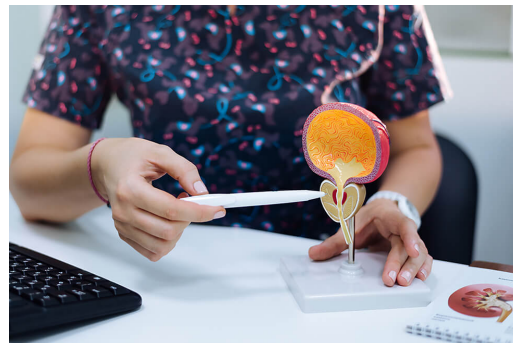
What is Urology?

Urology is a part of health care that deals with diseases of the male and female urinary tract (kidneys, ureters, bladder and urethra). It also deals with the male organs that are able to make babies (penis, testes, scrotum, prostate, etc.). Since health problems in these body parts can happen to everyone, urologic health is important.

Prostatectomy

Most laparoscopic prostatectomies (surgery to remove the prostate gland) are done with a surgeon-controlled robot. Small incisions called “ports” provide access for the surgical instruments, which include a tiny camera that guides the surgeon’s movements.

[Learn More](#)



Premature Ejaculation

If your partner is coping with premature ejaculation, be supportive. He might feel nervous about his sexual performance. Reassurance can be key.

[Learn More](#)

Prostate Cancer

Prostate cancer is the second most common cancer in men, according to the American Cancer Society. Yet there are many myths about prostate cancer. This article clarifies many of the common ones:

[Learn More](#)



Erectile Dysfunction: Coping Before & During Treatment

It can take time to find the right treatment for ED. And with lifestyle changes and surgery, it takes time for the situation to improve. What can men do in the meantime? How can they cope with ED in the here and now?

[Click To Read The Article](#)

Undescended Testicles in Children and How It Can Impact Adults

Boys born with an undescended testicle could be at higher risk for testicular cancer and fertility issues later in life. [Learn More](#)

Shy Bladder Syndrome

People with shy bladder syndrome have difficulty urinating near other people, such as in a public restroom. Research suggests that up to 25% of people in the U.S. have this problem to some degree. [Learn More](#)

PEDIATRIC UROLOGY

What is pediatric urology?

Click the link below to watch a video that may answer your questions!

Urology Care FOUNDATION™

The Official Foundation of the
American Urological Association

PEDIATRIC UROLOGY



CUC Patient Portal Login

BUSC Patient Payment
Portal

CONNECT WITH US!



Center for Urologic Care | 1320 Broadcasting Rd, 200, Wyomissing, PA 19610

[Unsubscribe hbuchman@centerforurologiccare.com](mailto:hbuchman@centerforurologiccare.com)

[Update Profile](#) | [Constant Contact Data Notice](#)

Sent by bykpoticher@centerforurologiccare.com powered by



Try email marketing for free today!